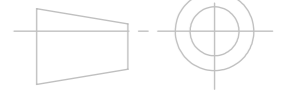


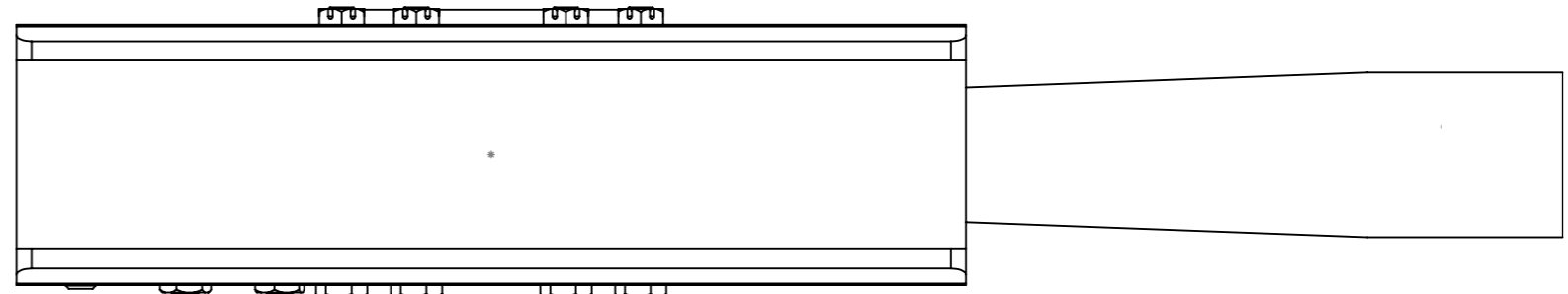
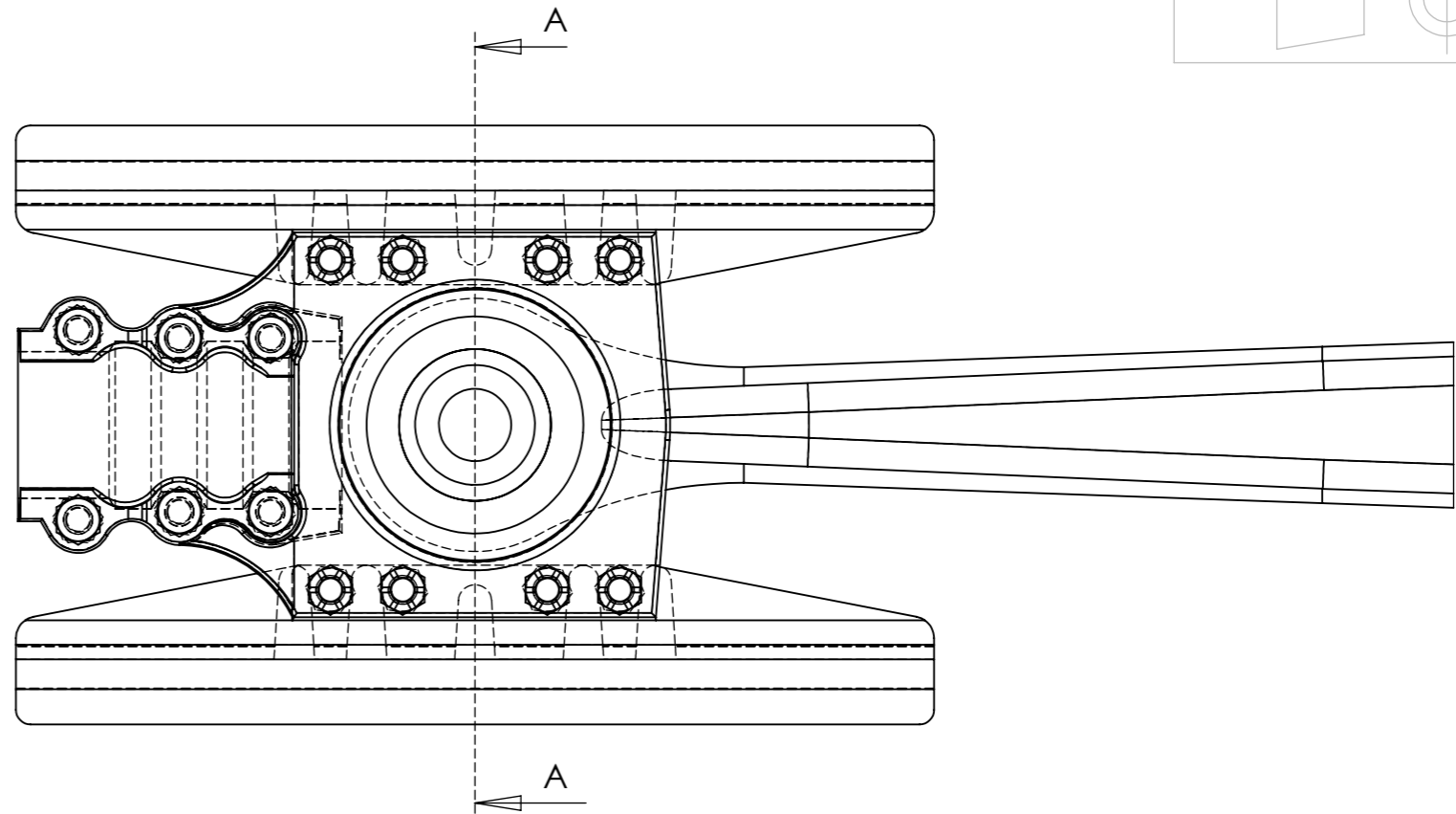
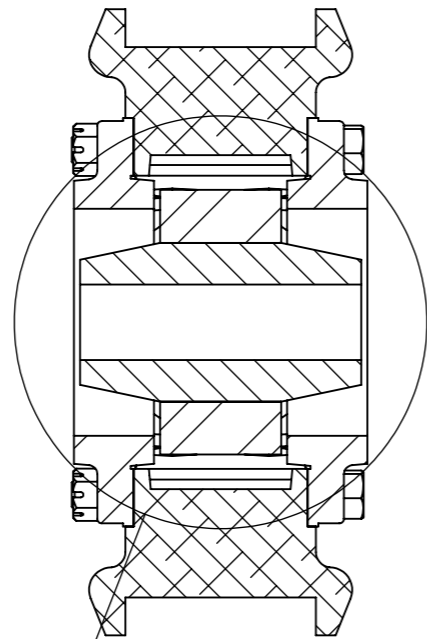
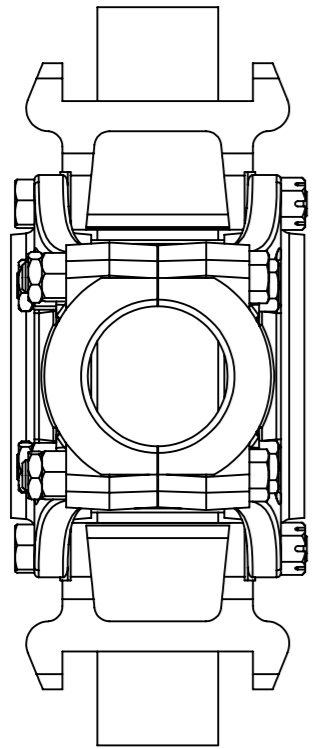
ENSURE ALL BURRS ARE REMOVED & SMOOTH SHARP EDGES & CORNERS

3rd ANGLE PROJECTION



A
B
C
D
E
F

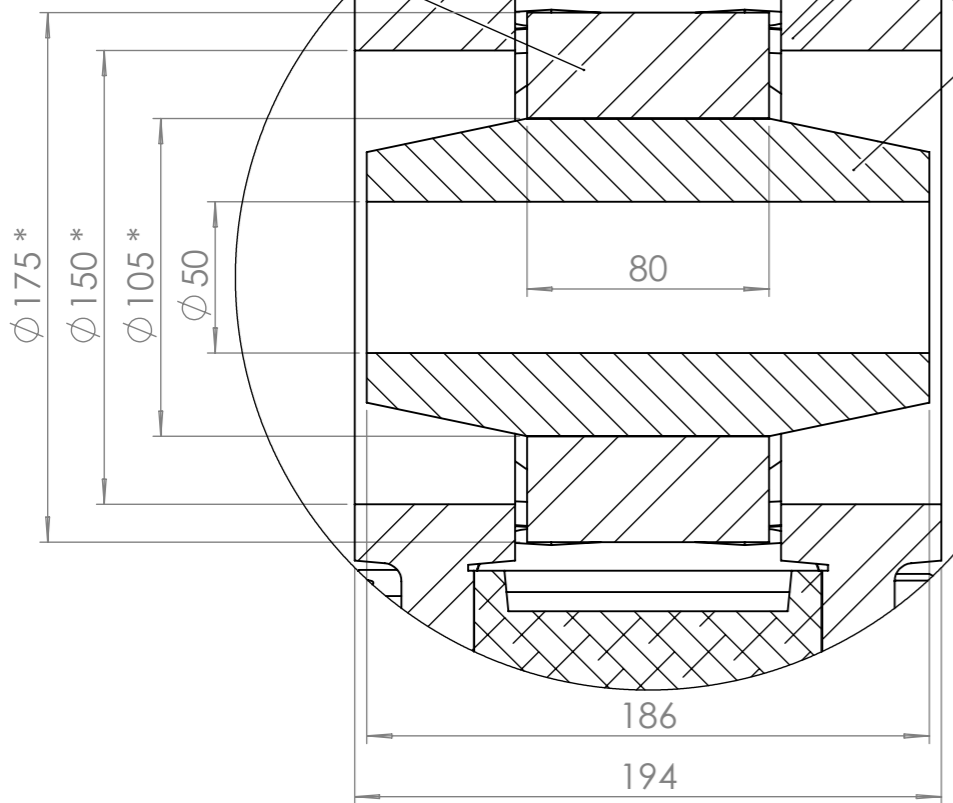
A-A (1 : 5)



CON. ROD

SIDE PLATES WILL BE RECESSED HERE TO SUIT BEARING FLANGE

GUDGEON PIN WILL ACT AS INNER BEARING CONE. TAPER ANGLE TO SUIT. PRESS FIT IN LITTLE END OF ROD.



NOTE
STARRED DIMENSIONS DENOTE FDC ORIGINAL SPECIFICATION. THESE MAY BE CHANGED BY A LIMITED AMOUNT TO SUIT THE AVAILABLE BEARING BUT WILL REQUIRE THE RE-CALCULATION OF STRESSES IN THE GUDGEON PIN & CON. ROD LITTLE END WHICH MUST REMAIN WITHIN THE SPECIFIED LIMITS. IT SHOULD ALSO BE NOTED THAT IT IS IMPERATIVE TO KEEP THE MASS OF THE ASSEMBLY AS LOW AS POSSIBLE.

TOLERANCES UNLESS STATED OTHERWISE

- LINEAR DIMNS. OVER 1000 - +/- 1,0
- LINEAR DIMNS. UNDER 1000:-
- NO DECIMALS - +/- 0,5mm
- 1 PLACE DECMLS. - +/- 0,2mm
- 2 PLACES DECMLS. - +/- 0,025mm
- ANGULAR DIMNS. - +/- 15'

Machined surfaces $\sqrt{1,6}$ USO

ISS.NO.	AMENDMENT	DATE:
---------	-----------	-------

DRWN. BY: RC	SCALE: N.T.S.	DATE: 10/05/08	A3
--------------	---------------	----------------	----

TITLE: PRELIMINARY CROSSHEAD LAYOUT for BEARING SPECIFICATION

DRG.NO. 5AT/MOT/0001/P	ISS.NO.1
------------------------	----------

MATERIAL:-

FINISH:-

